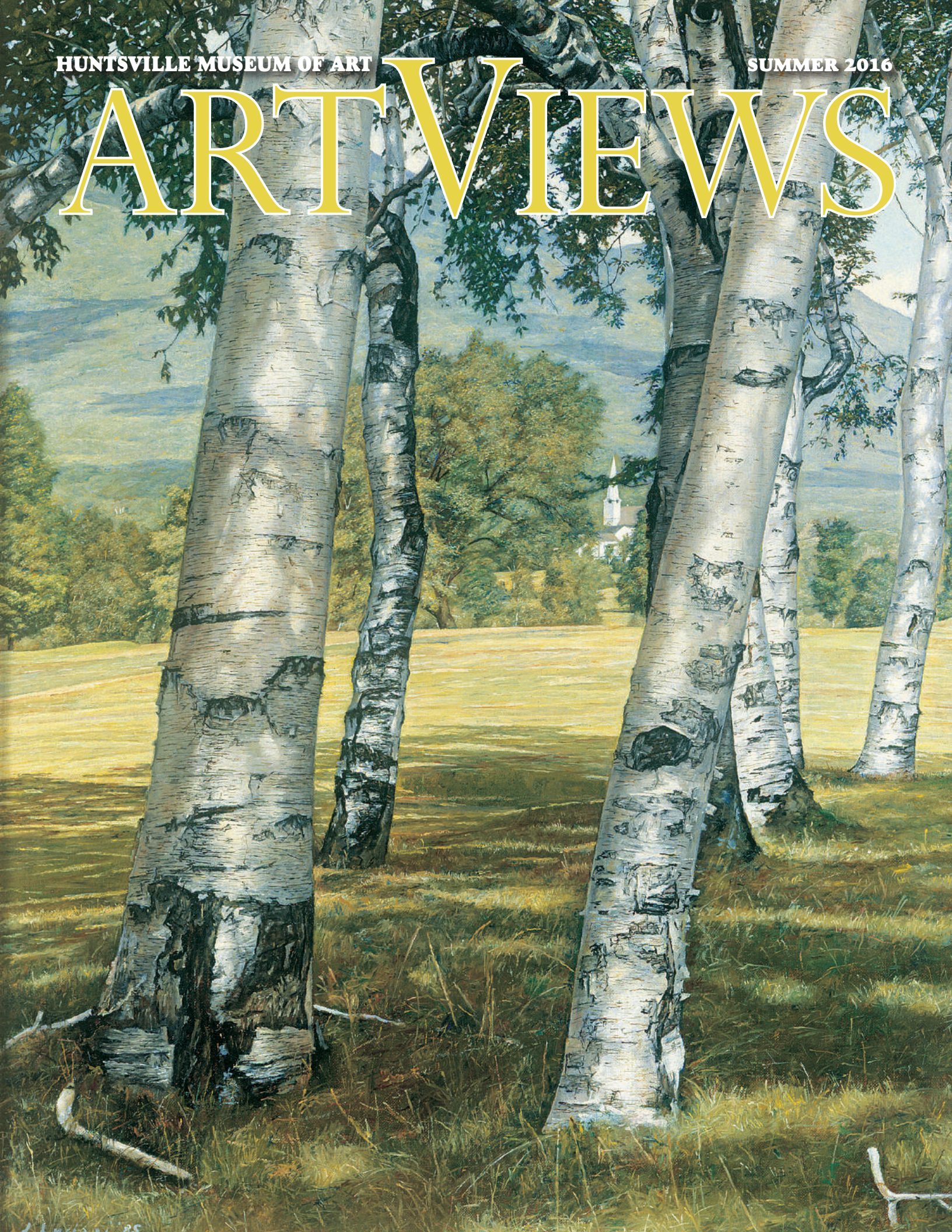


HUNTSVILLE MUSEUM OF ART

SUMMER 2016

ART VIEWS



HUNTSVILLE SYMPHONY ORCHESTRA PRESENTS ITS 2016-2017 SEASON

force of nature

Gregory Vajda, *Music Director and Conductor*

FAURÉ REQUIEM
Friday, September 16, 2016 | Classical 1

YOGA
Sunday, September 25, 2016 | Casual Classics 1

MAHLER 5
Friday, October 14, 2016 | Classical 2

WICKED DIVAS
Friday, November 4, 2016 | Pops 1

BÉLA FLECK & ABIGAIL WASHBURN
Saturday, December 31, 2016 | Pops 2

FLUTE AND HARP IMPRESSIONS
Saturday, January 21, 2017 | Classical 3

COMPOSE YOURSELF
Saturday, February 4, 2017 | **FREE** Family Concert

JOHN WILLIAMS
Saturday, February 4, 2017 | Pops 3

SYMPHONIES ON THE SIDE
Sunday, February 12, 2017 | Casual Classics 2

WAGNER WITHOUT WORDS
Saturday, February 18, 2017 | Classical 4

A PAINTER IN THE ORCHESTRA
Sunday, March 26, 2017 | Casual Classics 3

BEETHOVEN PASTORAL
Saturday, April 1, 2017 | Classical 5

THE RITE OF SPRING
Saturday, April 22, 2017 | Classical 6

VIDEO GAMES LIVE
Saturday, May 6, 2017 | **SPECIAL** Event

HSO.ORG
256.539.4818
700 MONROE STREET SW
SUITE 410
HUNTSVILLE, AL 35801

HSO
Huntsville Symphony Orchestra



Museum Board of Directors

Chairman: Richard Crunkleton
Vice Chairman: Walter (Tod) Dodgen
Secretary: Charlie Bonner
Treasurer: David Nast

Dorothy Davidson	Betsy Lowe
Sarah Gessler	Virginia Rice
Joyce Griffin	Herman Stubbs
Patsy Haws	John Wynn
Carole Jones	

Ex-Officio Members

Collections Committee: Rosemary Lee
Foundation Board President: Dabsey Maxwell
HMA Guild President: Sasha Sealy

Foundation Board

President: Dabsey Maxwell
Vice President: Parke Keith
Secretary: Kerry Doran

Heather Baker	Rosemary Lee
Caroline Bentley	Todd McBride
Nancy Bradford	Blake Mitchell
Vicki Edwards	Anne Pollard
Patrick Fleming	Cathy Scholl
Laurie Heard	Lori Webber
Wendy Johnson	Charlotte Wessel
Cindy Kamelchuk	

Emeritus: Betty Grisham

Ex-Officio Members

Collections Committee: Rosemary Lee
HMA Guild President-Elect: Kathi Tew
Museum Board: Joyce Griffin and Herman Stubbs

Guild Officers

President: Sasha Sealy
President-elect: Kathi Tew
Secretary: Martha Wilson
Treasurer: Stacey Goldman
Assistant Treasurer: Ina Wilson Smith
Staff Liaison: Verronica Mitchell

Museum Docents

Docent Chair: Kate Leonard **Co-Chair:** Laurie Noojin

Museum Staff

Executive Director: Christopher J. Madkour
Executive Assistant: Verronica Mitchell
Director of Curatorial Affairs: Peter J. Baldaia
Curator of Exhibitions and Collections: David Reyes
Curatorial Assistant: Katherine Purves
Exhibitions and Collections Assistant: Hannah Delp
Director of Education/Museum Academy:
Laura E. Smith
Education Associate: Candace Bean
Museum Academy Assistant: Amy Thomas
Director of Communications: Stephanie Kelley, APR
Communications Associate: Wiley Belew
Director of Development: Andrea Petroff
Development Associate: Brianna Sieja
Membership/Development Operations Associate:
Anita Kimbrough
Accountant: Wendy Worley
Accounting Assistants: Tonya Alexander,
Mary Chavosky
Facility and Event Manager: Lil Parton
Facility Rental Assistant: Susan Dana
Security Guards: Britney Boles, Timothy Lawson,
Jeanne Manley, Steve McCoy, John Solari,
Charlie Tolbert, Lexie Wadsworth, Robert Walker
Guest Services Representatives: Victoria Gunter,
Linda Nagle, Wendy Campbell
Museum Store: Rachael Stone
Museum Store Coordinator: Janell Zesinger
Volunteers: Jerry Brown, Anne Burke, Amelia
Hakonsson, Billie Muhl, James Shelton,
Mary Withington
Maintenance/Custodian: Rich Krumrie



Dear Museum Members,

What an amazing spring season we have enjoyed! From the success of GALA's 25th Anniversary Celebration to *Folk Fusion's* over the top opening party to the *Voices of Our Times* stellar line up, the museum has had a remarkable season. And it is far from over! In this spring and summer issue of *ArtViews*, we have highlighted upcoming events you certainly will not want to miss.

On Thursday, June 9, the *Voices of Our Times* series closes its season with a luncheon and book signing by renowned interior designer Bunny Williams. Don't miss this rare opportunity to hear one of America's foremost interior designers discuss the highlights from her latest book, *On Garden Style*. Committee chair Leslie Crosby urges you to reserve your table today!

Those who have traveled around this fine land will certainly identify with the thought that America is a land of extreme contrasts. This notion is reinforced by the artwork of two distinctly different yet, at their core, similar individuals – artist Luigi Lucioni and politician (and photographer) Barry Goldwater. Both individuals had a deep spiritual connection to the land around them: Lucioni painted the verdant Green Mountains of Vermont and Goldwater, naturally enough, photographed the rugged Arizona desertscape.

On Saturday, July 9, we will showcase the works of these two accomplished artists. Having personally known Luigi Lucioni from my days in Vermont, along with my family's connection to the Goldwater family, both exhibitions are very personal to me. Joanne Goldwater, daughter of the late Senator, will meet and greet guests, and Dr. Stuart Embrey and Doug Mariboe, friends of Lucioni, will speak of their connections with one of America's finest realist painters. A heartfelt note of appreciation to our Corporate Sponsors PNC and Davidson Technologies and the many individual sponsors who are listed on page 23.

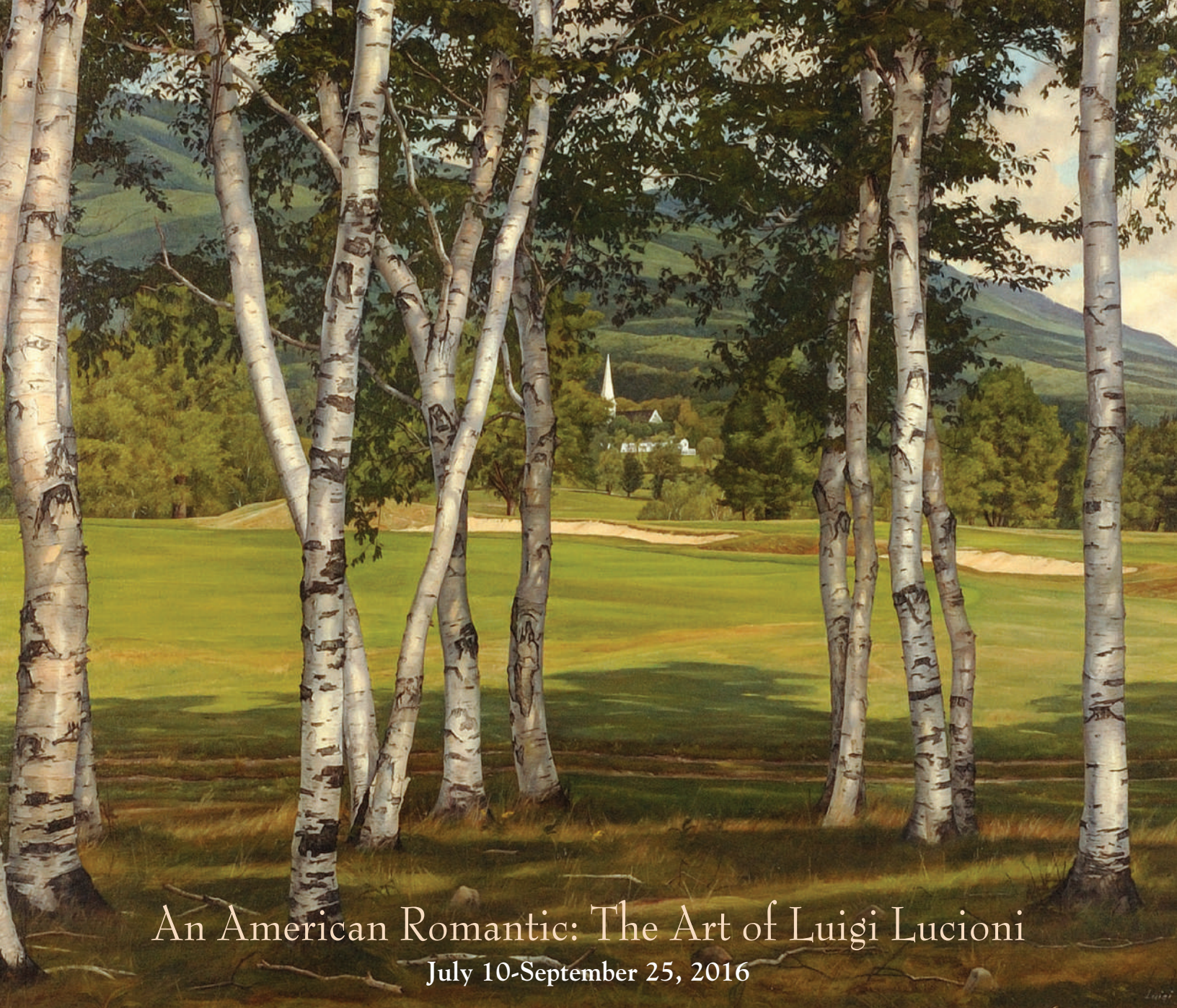
In closing, the museum recently lost one of its most loyal and conscientious employees, Security Supervisor Linda Berry. Linda fought a tough battle with cancer over these past two years, very rarely missing a day of work. That was Linda. She served this museum for 18 years, overseeing a myriad of details to keep us and the collection safe and secure. She was stubborn when she needed to be, loyal as the day is long, and she'll be greatly missed by all who knew her. I, for one, think of her often – I can still hear her signature line, "Don't worry. I'll take care of it." And she always did. Many thanks, Linda!

Christopher J. Madkour
Executive Director



Linda Berry with her sister Lil Parton, HMA's Facility and Event Manager

On the cover: Luigi Lucioni (American, 1900-1988), *A Farewell to the Birches*, 1985, oil on canvas, 23 x 19 in. Collection of Southern Vermont Arts Center, Gift of Ida Galvanoni.



An American Romantic: The Art of Luigi Lucioni

July 10-September 25, 2016

Within the Birch Grove (detail), 1957, oil on canvas, 22 x 30 in., Collection of Southern Vermont Arts Center, Gift of Mr. and Mrs. Bernard Peyton.

Decisively independent and amazingly dexterous, Italian-born painter Luigi Lucioni (1900-1988) is recognized today as one of the finest American Scene artists of the mid-20th century. Organized by the Huntsville Museum of Art, *An American Romantic: The Art of Luigi Lucioni* will present approximately 50 oil paintings and etchings by this critically-acclaimed artist. The works are borrowed from private and public collections of The Metropolitan Museum of Art and the Whitney Museum of American Art in New York City, New York, the Telfair Museum in Savannah, Georgia, and the Southern Vermont Arts Center, in Manchester, Vermont.

Lucioni came to the U.S. in 1911 with his family, studying at Cooper Union Art School and the National Academy of Design. In 1930, his most important patron, Electra Havemeyer Webb, commissioned him to paint a Vermont landscape for her daughter's wedding and invited him to stay at the family's summer estate in Shelburne, Vermont. In 1932, he and his two sisters moved to Manchester Center, where he resided until his passing in 1988.

The state's verdant mountainous terrain had such a profound effect on him that he later exclaimed: "I was reborn in this majestic setting, and I fell in love with Vermont."

Lucioni received significant recognition when The Metropolitan Museum of Art purchased *Pears with Pewter* in 1932, making Lucioni the first and youngest contemporary American to have a painting acquired by The Met.

Over the course of his long career, Lucioni produced countless paintings and etchings depicting the rolling landscape of his adopted home. Regionalism (also known as American Scene painting) was an art movement popular in America from the 1920s through the 1950s. The movement encompassed artists who shunned city life and technological advances in favor of depicting scenes of the countryside. During The Great Depression, Regionalist art was widely appreciated for its reassuring images of rural America.

CO-LEAD SPONSORS





Self Portrait, 1949, oil on linen, 32 x 26 in., Collection of Southern Vermont Arts Center, Gift of Mr. and Mrs. D. Mariboe.



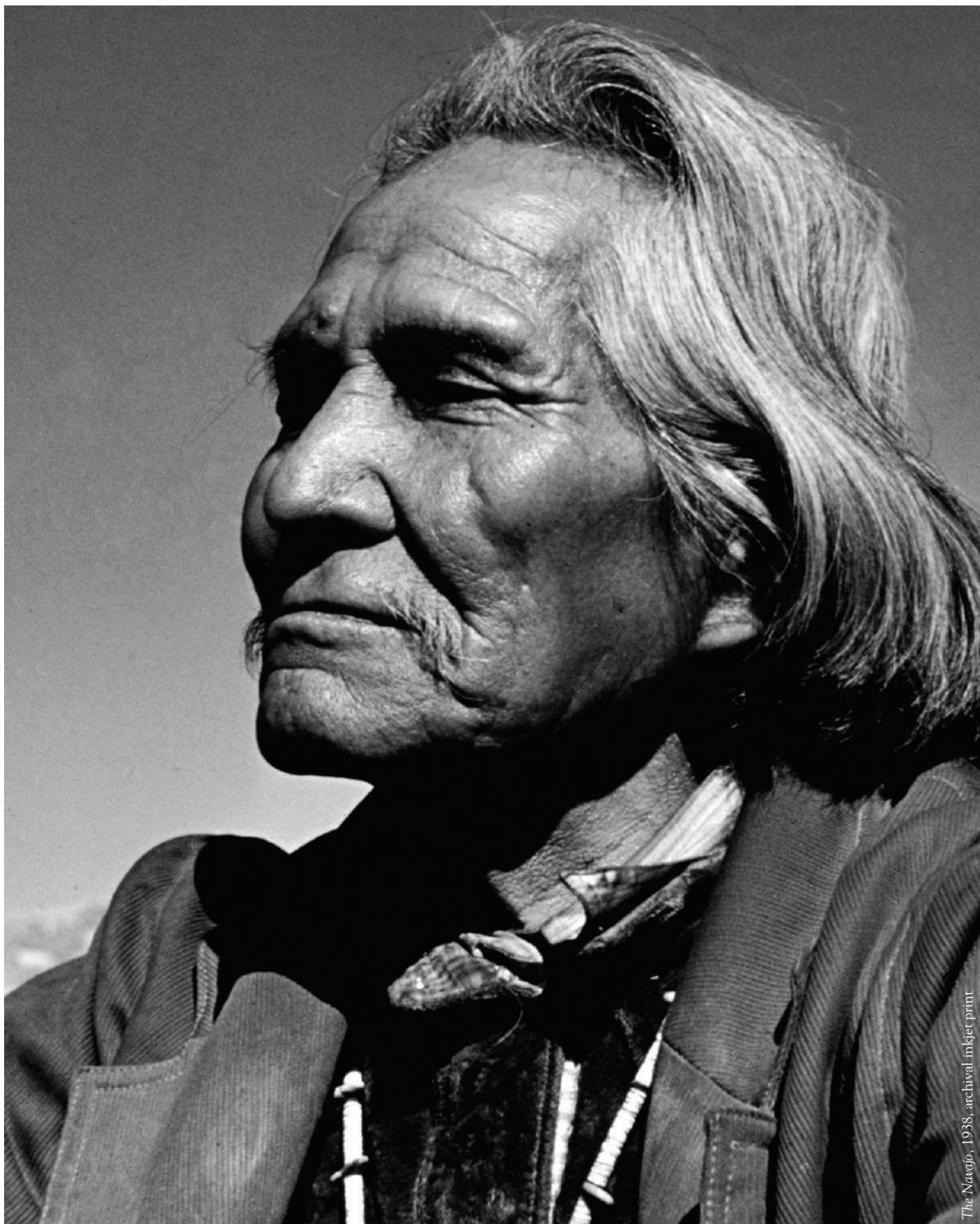
Pears with Pewter, 1930, oil on canvas, 20 $\frac{1}{4}$ x 28 $\frac{1}{8}$ in., George A. Hearn Fund, 1934, © Copyright. The Metropolitan Museum of Art, New York, NY, U.S.A.



The Steeple in the Mountains, 1945, oil on canvas, 30 $\frac{3}{8}$ x 42 $\frac{1}{4}$ in., Telfair Museum of Art, Gift of Mrs. Elizabeth de C. Wilson, Photographer: Peter Harholdt.

SAVE THE DATE!

Preview Party for *An American Romantic: The Art of Luigi Lucioni AND Homeland: Photographs by Barry M. Goldwater*
 Saturday, July 9 6-8 p.m. Members: \$30/Non-members: \$50



The Navajo, 1938, archival inkjet print

Homeland: Photographs by Barry M. Goldwater

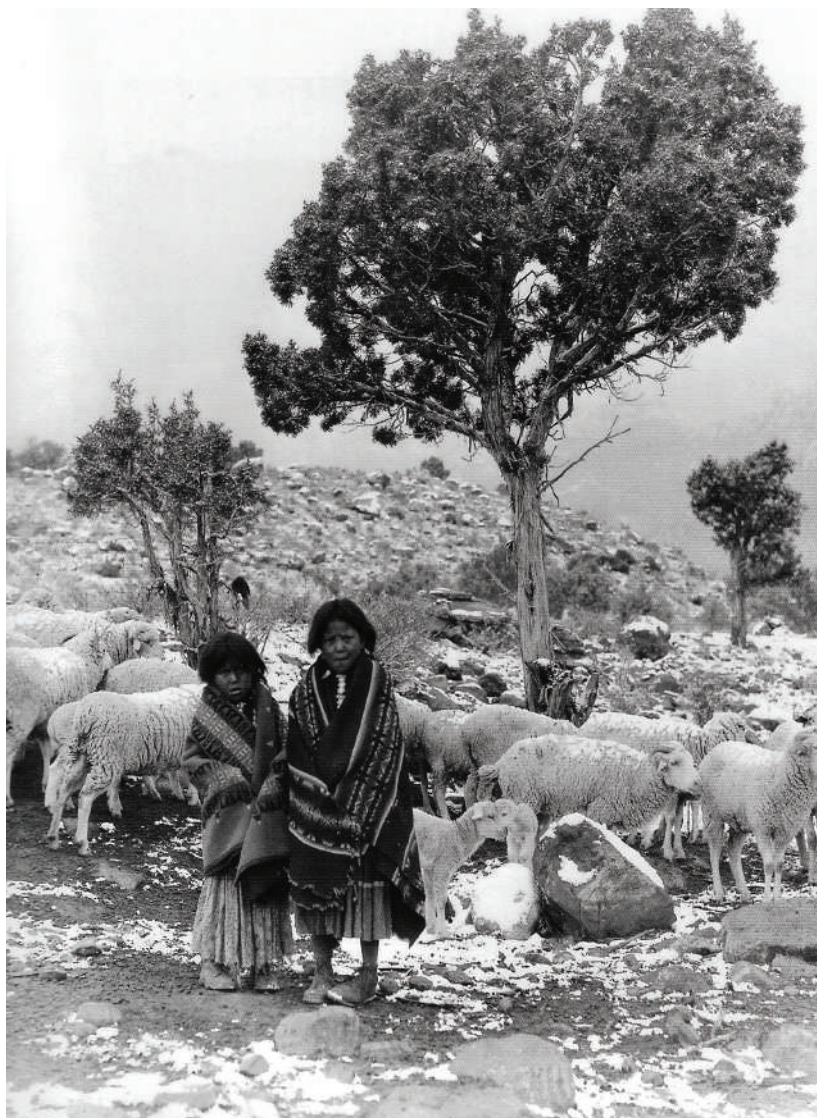
July 10-September 25, 2016



Westward Ho, circa 1938, archival inkjet print



The Valley, 1967, archival inkjet print



The Shepherdess, 1946, archival inkjet print

A man of many talents—politician, ham radio operator, western art collector, major general in the Air Force Reserve, businessman, and photographer—Barry M. Goldwater represented Arizona in the U.S. Senate for almost 30 years. In 1964 he received the Republican Party's nomination for president and is now celebrated as the founder of the conservative movement which led to the 1980 election of Ronald Reagan.

While many people may know him from his political career, few are aware of Senator Goldwater's talent as a photographer, an interest which began at a young age. In 1934, when he was 25, his wife Peggy gave him a 2¼ inch Rolleiflex camera, and photography became his passion.

Representing his most iconic images of western landscapes and Native Americans, *Homeland* will feature 22 black and white images scanned from Goldwater's original negatives and hand selected by the Huntsville Museum of Art. Dating from 1936 to 1967 and spanning more than 30 years of Goldwater's photographic production, these images present evocative landscapes, genre scenes, and portraits documenting his beloved state of Arizona.

The Goldwater family came to Arizona in the mid-19th century and established themselves as both businessmen and civil servants. Influenced by his mother, Goldwater's love for Arizona ran deep, and he documented its landscape and indigenous people from the 1930s until his death in 1998.

Over a span of 30 years, during his travels, he took more than 15,000 photographs.

"He carried a camera with him everywhere he went, and there is no other individual who has documented Arizona's vast southwestern landscapes and Native Americans as he did," said Alison Goldwater, his granddaughter who is helping organize the exhibition.

Barry Goldwater once said, "My photography has taken me over, literally, every mile of the Southwest, over both poles and every major country on the globe, but it is to Arizona that I turn for my inspiration and what I think has been my best work."

Goldwater's photographs have been shown in more than 250 exhibits in the United States and Europe and graced the pages of *Arizona Highways* magazine nearly 200 times, beginning in 1939. The Royal Photographic Society of London even elected him to membership. He was also a member of the Photographic Society of America.

This exhibition is organized by the Huntsville Museum of Art and Alison Goldwater. It is supported by GoldwaterPhoto, which manages the Goldwater photography collection. Joanne Goldwater, his daughter, and other family members will attend the opening Preview Party at the Museum on Saturday, July 9.

CO-LEAD SPONSORS



Frozen in Place: Southern Photographs from the Collection

Now through August 21, 2016



Jim "Ollie" Oliver (b. 1944, Wichita Falls, TX), *Little Blue Sunroof*, 1985, hand-colored photograph, 13.25 x 19.5 in., Gift of the Artist.



Carolyn Sherer (b. 1957, Jasper, AL), *Katie and Wade*, 1996, gelatin silver print on warm toned paper, 13 x 16.5 in., Museum Purchase, Funds provided by the Dr. John Rison Jones, Jr. Endowment and the Susy and Robert Thurber Endowment.

As one of the nation's most culturally distinct regions, the American South has long been a magnet for artistic exploration and documentation. Because of the camera's ability to so vividly record reality, many artists have chosen the medium of photography as the vehicle to convey their unique impressions and experiences of the South.

Frozen in Place presents more than 50 photos which tell compelling stories about our region's unique people, places, and traditions. From the Museum's permanent collection, many were added in the 1980s and early 1990s through a series of original exhibitions curated by local photographic archivist and historian Frances Robb, wife of former Museum Director David Robb.

The Museum is fortunate to have large holdings of photographs by critically-acclaimed artists like William Christenberry, Chip Cooper, John Reese, and Kathryn Tucker Windham. Exhibition highlights include Pinky Bass' evocative self-portrait taken with a simple pinhole camera; James Morris' image of rampant kudzu engulfing everything in its path; and three different takes on traditional African-American river baptisms by John Reese, Kathryn Tucker Windham, and Caroline Davis.



John Reese (American, 1916-2002), *Baptism Rite, Gee's Bend, AL* (detail), 1980 (printed 1994), toned gelatin silver print, 10.25 x 10.5 in., Museum Purchase, Pauline Cagle Osborn Memorial Fund.

Huntsville Photographic Society 2016 Members' Showcase

Now through August 21, 2016

Don't miss this snapshot of Huntsville's most talented photographers. *The Huntsville Photographic Society (HPS) Members' Showcase* is an annual, juried exhibition of photographs by HPS members. This year's exhibition includes 50 photographs, both color and black and white which range in subjects and styles.

HPS is an organization dedicated to promoting the art and science of photography in Huntsville and the surrounding area through informative programs, member contests, and special events.



Barbara Hitt, *Cuban Tobacco Farmers*, 2015, monochromatic photograph

Encounters: Dustin Farnsworth

June 26-October 30, 2016



The Order of Lords (detail), 2015,
basswood, poplar, charcoal, various
polychrome, 55 x 22 x 35 in.

The Museum's award-winning *Encounters* series of regional contemporary art continues with the intriguing three-dimensional art of an emerging North Carolina artist. Dustin Farnsworth's hand-carved sculptures encapsulate his interests in character, story, craft, mechanics, composition, empathy, and social commentary.

"However, the artist sees his work as far more than sculpture; he fills the roles of the architect, storyteller, and cinematographer to construct detailed, immersive experiences that lead the viewer deep into a visual narrative," Peter J. Baldaia, HMA's director of Curatorial Affairs, said. "In Dustin's words, he creates 'lush, emotionally charged rabbit holes to fall into and explore.'"

Farnsworth grew up in a creative environment, but making art wasn't his only outlet as a young man. His high school drama program helped instill in him an affinity for the theatrical, which is reflected in his current works featuring life-sized heads adorned with mixed-media headdresses that suggest architectural spaces.

"I was raised in a community based in industry, seduced by the sights and sounds of production," Farnsworth said. "My work explores the narrative that unfolds as industry leaves these communities, and my hand-carved figurative sculptures blur the line between realism and vintage plaything."

Join us for a
Gallery Walk and Opening Reception
with *Encounters* Artist Dustin Farnsworth

Sunday, June 26 • 2 p.m.

The program begins in the Grisham Gallery.

The HMA docents will host a reception in the Richard & Roper Room following the program.



Promontory, 2013, pine, basswood, poplar, plywood, veneer, bendable plywood, steel, luan, human hair, various polychrome, 42 x 42 x 44 in.



Over the Top: American Posters from World War I

From the Norman Rockwell Museum

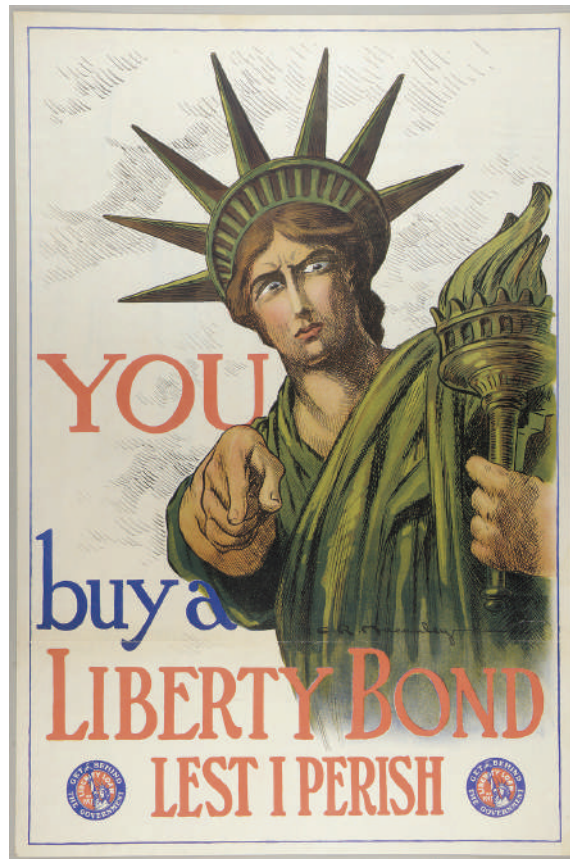
July 24-October 2, 2016

Joan of Arc raises her sword – “Joan of Arc Saved France. Women of America, Save Your Country,” reads the poster that bears her image. A stern-faced Statue of Liberty clutches the flame of freedom and points her finger: “You Buy a Liberty Bond Lest I Perish.” Another bears a drawing of a helmeted soldier charging forward, head back, mouth open, gripping an American flag. “Over the Top for You,” the poster reads.

These and dozens of stunning images, from the permanent collection of Norman Rockwell Museum, are featured in this traveling exhibition of illustrated posters from World War I. Organized by Norman Rockwell Museum, *Over the Top* explores the role of illustrated images in rallying Americans to the cause and shaping perceptions of the war.

During World War I, posters roused Americans to support their troops, fund international aid projects, and buy bonds to finance the war effort. They were installed in libraries, post offices, and schools as prominent reminders of the need for support.

Leading illustrators of the day including J.C. Leyendecker, James Montgomery Flagg, Howard Chandler Christy, and Jessie Willcox Smith, contributed their talents to create posters



You Buy A Liberty Loan Lest I Perish, Charles Raymond Macauley, 1917. Gift of Thomas L. and Edward L. Pulling, Norman Rockwell Museum Collections

Join us for a Members' Preview Reception
Saturday, July 23 • 6 to 8 p.m.
Look for more details to come this summer!



Fight or Buy Liberty Bonds, Howard Chandler Christy, 1918. Gift of Thomas L. and Edward L. Pulling, Norman Rockwell Museum Collections.



Over the Top for You, Sidney H. Riessenberg, 1918. Gift of Thomas L. and Edward L. Pulling, Norman Rockwell Museum Collections.

and billboards that had a powerful impact. Their illustrated imagery spurred the sale of over \$20 billion in government bonds—two-thirds of the total cost of American participation in the war.

“At critical periods in our nation’s history from the Civil War onward, the illustrators have buoyed up and inspired Americans,” said Laurie Norton Moffatt, director/CEO of Norman Rockwell Museum. “Norman Rockwell did the same.”

The exhibition features selected posters donated from the collection of Norman Rockwell Museum Trustee Emeriti and former Chairman Thomas L. Pulling and Edward Pulling, grandson and great-grandson of the Honorable R.C. Leffingwell, assistant secretary of the Treasury and head of the War Loan Organization. Leffingwell was charged by President Woodrow Wilson and Secretary of the Treasury William G. McAdoo to devise a strategy for underwriting the war effort. He received this collection of posters in gratitude for his role in the success of the war loan campaigns.

LEAD SPONSOR

IBERIABANK



Have You a Red Cross Service Flag, Jessie Willcox Smith, 1918. Gift of Thomas L. and Edward L. Pulling, Norman Rockwell Museum Collections.

25th Annual Gala

Sincere thanks to our Gala Chairmen
and all of the Gala committee volunteers!

Gala Chairs: Suzan Boyce, Melanie Murray, Betsy Robinson,
Angie Yeager

Luncheon Chairs: Kerry Doran and Eleanor Loring

Black Tie Dinner Chairs: Charlie Bonner and Pamela Gann

Cocktail Party Chairs: Lori Meyer and Mandy Selman

Gala Sponsors

The Huntsville Museum of Art and the 2016 Gala Committee
gratefully thank our sponsors:

Platinum Sponsors

Bentley Automotive
Damon Automotive Group
Frank Williams Dealerships
High Tower Twickenham
Progress Bank
Smith-Thornton Advisors
Angie and Sam Yeager

Silver Sponsors

BBVA Compass Bank
Big Spring Environmental
Bill Penney Toyota
Brasfield and Gorrie General Contractors
Complete Dental
eLab Solutions
Hiley Cars of Huntsville
Jurenko Family Foundation
Maynard Cooper and Gale PC
Maynor and Mitchell Eye Center
Mercedes-Benz of Huntsville
Dr. Rhett Murray
Regions Bank
Sports Med Orthopaedic Surgery and Spine Center
Jean Wessel Templeton

Bronze Sponsors

Mr. and Mrs. David Block
Bradley Arant Blount Cummings LLP
Clinic for Women
Genesis II
Lanier Ford Shaver & Payne PC
McDaniel and McDaniel LLC
Parsons
Pearce Construction
Phsyenergy
Randolph School
Rheumatology Associates of North Alabama
The Surgery Center of Huntsville
Wells Fargo

Car Chance Sponsor

Century Automotive

Gala Luncheon

with Textile Designer Rebecca Vizard

March 1, 2016



Eleanor Loring, Kerry Doran, Christopher Madkour, Rebecca Vizard



Ann Ever Ainsworth, Kara Howard



Beth Richardson, Jean Wessel
Templeton



Laura Reynolds, Pam Honkanen, Beth Flatt

Mark your calendars for the 26th Annual Gala in 2017!

Gala Luncheon: February 28 | Black Tie Dinner & Live Auction: March 2 | Cocktail Party & Silent Auction: March 4

We're pleased to announce the 26th Annual Gala Chairs: Leslie Evans, Paige Prozan, Tabby Ragland, Susan Todd.

25th Annual Gala

Gala Luncheon (continued)



Luncheon guests take in Vizard's exquisite pillows.



Cathy Scholl, Julie Gold, Elise Taylor, JJ Shoemake

Gala Black Tie Dinner and Live Auction March 3, 2016



David Lucas, Rhett Murray, Kevin Webber, Tim Curran



Sabrina and Brian Miller



Jason and Mandy Selman, Lori and Matt Meyer



Sherry Smith, Pam Gann, Samantha Bentley



Christy Lurie, Beverly Farrington, Tracy Jones



Marcus and Henri Helstowski, Jean Wessel Templeton, James Wessel

Gala Cocktail Party and Silent Auction

March 5, 2016



Doug and Carly Bryant



Laura and Adam Bernick



Angie Yeager, Melanie Murray, Betsy Robinson, Suzan Boyce



Sara Ahearn, Beth Moring, Jean Warren



Christy Alison, Charley Burruss, Bobby Bradley, Bill Alison



Lori Webber, Nona Carson



Carl and Sarah Gessler, Bill Sullins, Randy Roper, Ken Rivenbark



Scott and Carrie McCary, Lee and David Nast



FOLK FUSION: Opening Party for *Folk Couture: Fashion and Folk Art*

April 7, 2016

1. deLoain Burgess of deLoain, Inc. New York salon with his fabulous models
2. Overall Design Winner Sarah Steles of Auburn University
3. Stacey Goldmon, Carole Anne Ellers, Lori Meyer, Courtney Ellers Conklin, Melanie Ellers
4. American Folk Art Museum's Stacy Hollander and Anne Imelda Radice, Christopher Madkour, Sasha Sealy
5. Attendees enjoy music by The Sweplings.
6. Lierin Achord and Justin Pociask take in the original couture by threeASFOUR.
7. Crowd Favorite Designer Amanda Chiogioji of the University of Alabama
8. Stephanie and Jason Lowe





Folk Fusion and Fashion Fusion Face-off Sponsor Reception

April 7, 2016

1. Leka Medenbach, Joe and Marie Newberry
2. Steve and Denise Murphree, Laura Vann, Cheryl and Jim Matthews
3. Guild Committee for Folk Fusion and Fashion Fusion Face-off.
Seated l. to r.: Martha Collins, Laura Reynolds, Kristen Bodeker.
Standing l. to r.: Laura Vann, Ali Sherrod, Cheryl Matthews, Lindsay Rice, Laura Moss, Kathi Tew, Rhonda Ridner
4. John and Ashley Clark
5. John and Darlene McMullan, Julie and Bob Broadway
6. Chris and Susan Lindsey
7. Davis Reed, Wes Neighbors



Be sure to stop by the Museum's Portico during Downtown Huntsville's Street Food Gatherings. You can purchase and enjoy craft beer, wine, and other scrumptious libations like homemade sangria. **Palette Pitstop will be open from 5:30 to 9 p.m. on Fridays, June 17, July 15, and August 19.**

Registration ongoing for summer art classes!



Looking for the perfect activity to keep your children (or yourself) busy but happily learning this summer? We offer a wide selection of classes in two classrooms overlooking beautiful Big Spring Park. Pre-registration is required, and all materials are provided for children's classes.

Following are just a few of the classes being offered now through mid-September. Space is limited, so register online or call today.

Preschool Classes

Art Sampler
Mudworks
The ABCs of Art
Art in the Round
Sparkle, Glitter & Glow
Alphabets & Animals

Grades K-8

Mixed Media
Whimsical 3-D Art
Drawing & Painting
Ceramics
Comics & Cartooning
Art EXPLORERS
Bedazzled Jewelry Making
Ready, Set, Paint

Saturday Classes for Children and Teens

Things that Crawl, Wiggle & Roar
Watercolor Wonders

Saturday Classes for Parent and Child

Colorific Creations
Zootopia: Art Safari

High School and Adult Classes

Watercolor
Acrylic Painting: Landscapes & Still Life
Drawing
Ceramics: On & Off the Wheel
Wire Sculpted Jewelry & Accessories
Stained Glass Sun Catchers
Color Pencil & Graphite
Still Life: Acrylic & Oil Painting Methods
Color & Design: Floral/Still Life in Oil
Ceramics: Wheel Throwing

Who do you contact?

Director of Education/Museum Academy
Laura E. Smith: lsmith@hsvmuseum.org
Register online and read instructors' bios at hsvmuseum.org.

For a copy of the complete Summer 2016 Museum Academy Schedule, contact Museum Academy Assistant Amy Thomas: athomas@hsvmuseum.org.



Take your skills to the next level...learn from a nationally-recognized artist!

Don't miss a unique opportunity to receive one-on-one instruction from a nationally-recognized master artist. For more information about the instructors, please visit their websites.

To register, visit hsvmuseum.org/museumacademy, and click Master Artist Workshops, or contact Director of Education/Museum Academy Laura E. Smith at 256-535-4350 ext. 222.

Capturing Light, Color and Atmosphere in Pastel with Robert K. Carsten

Thursday-Sunday, August 18-21
9 a.m. to 4 p.m.

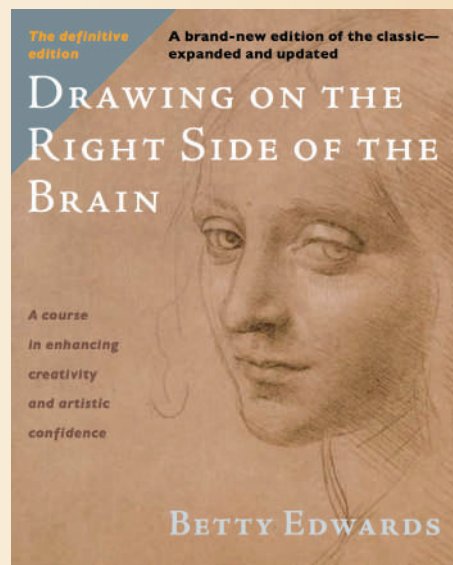


Afternoon's Light, pastel ©2015 Robert K. Carsten

Skill Level: All levels welcome
Fee: \$425 members/\$450 non-members

Drawing on the Right Side of the Brain with Brian Bomeisler

Monday-Friday, October 3-7
9:30 a.m. to 5:30 p.m.



Drawing on the Right Side of the Brain book cover

Skill Level: All welcome
Fee: \$1,600 members and non-members

PART II Drawing on the Right Side of the Brain Follow-on Drawing Class with Brian Bomeisler Saturday-Sunday, October 8-9 9:30 a.m. to 5:30 p.m.



Student Example ©2014

Skill Level: All welcome
Fee: \$825 members and non-members

Watercolor Portraits with Ted Nuttall Monday-Friday, November 7-11 9 a.m. to 4 p.m.



So Much to Say, watercolor ©2014 Ted Nuttall

Skill Level: Intermediate to advanced
Fee: \$675 members/\$700 non-members

More Master Artist Workshops in 2017

Jean Hess (February 3-4); Kathy Durdin (March 16-19); Qiang Huang (March 23-25); and Mel Stabin (April 3-7).

Drop-in & CREATE Saturdays

Who: Appropriate for the entire family!
What: A hands-on art activity (no reservations necessary)
When: One Saturday of every month, 11 a.m.-1 p.m.
Where: Stender Family Interactive Education Galleries
Cost: FREE admission for parents/guardians and children*

June 18*: Rockin' Rockets

Craft your own star-spangled rocket! Use folded paper, ribbon, and stickers to make a hanging Independence Day sculpture.

July 16: FUN in the Sun!

Create a fun summer scene using printmaking techniques and drawing.

August 20: Imaginary Inkblot Creatures

Use your imagination to transform a blob of ink into a one-of-a-kind animal, monster or alien.

September 17: FABULOUS Fall Trees

Learn about the artwork in the exhibition *An American Romantic: The Art of Luigi Lucioni*. Produce your own fall tree with leaves using art tissue papers and other elements.

* Note: General admission is required to view *Folk Couture: Fashion and Folk Art*.

Artsy Tots

Thanks to all who have registered for our Artsy Tots classes. At this time, classes from now through September are FULL. If you would like us to add your name to a WAITING LIST for a class (see dates at hsvmuseum.org/museumacademy), please contact Candace Bean at 256-535-4350 ext. 223.



Joyce Griffin

DROP-IN & CREATE PROUDLY SUPPORTED BY



Joyce Griffin

ADDITIONAL SUPPORT PROVIDED BY
Huntsville Museum of Art Guild





Youth Art Month Opening Day and Awards

March 13, 2016

1. Youth Art Month artist and student Isabell Hyatt
2. 2016 Visual Arts Achievement (VAA) Blue Ribbon Finalists and Congressional Art Competition (CAC) Honorable Mentions: (front center) Andrew Chase, (Back row l. to r.) Bethany Matje, Chryselle Alvarado, Christophre Dennen, Chandler Nguyen, Tyler Adkins, Anna Chason Buchanan, Bentley Russell, Sara Clark.
3. Mayor Tommy Battle, Congressional Art Competition winner Shayla Massey from Decatur High School, Marissa Garcia of the Savannah College of Art and Design
4. Diane Kim, Yoonju Kim, Aiden Kim
5. Families enjoy puppetry arts with artist Anna Sue Courtney.



Docents—a vital link between the Museum and the public!

A docent is a volunteer tour guide. The word derives from the Latin word docere, meaning “to teach.” Docents serve as a vital link between the public and the Museum. They facilitate learning by helping audiences of all ages understand and enjoy our permanent collections and traveling exhibitions. They also engage visitors in interactive experiences that give them a new appreciation for the visual arts. Schools and groups may also arrange in advance for a docent to lead their tours. If you are interested in joining the docent program, contact Education Associate Candace Bean at 256-535-4350 ext. 223 or cbean@hsvmuseum.org. Training classes will begin in September.

Docent-Led Public Tours on Sundays
Meet in the main Church Street lobby.

June 26 at 1 p.m.

Folk Couture: Fashion and Folk Art

August 21 at 2 p.m.

Frozen in Place: Southern Photographs from the Collection

September 25 at 2 p.m.

An American Romantic: The Art of Luigi Lucioni

Thank You!

Individual Memberships December 2015-April 2016

Artists' Circle: \$1,500

Mr. and Mrs. Robert Baron Sr.
Dr. and Mrs. Jerry M. Graham
Dr. and Mrs. Frank P. Haws
Mrs. Shelbie King
Mr. and Mrs. Byrd R. Latham
Mr. and Mrs. Joe Lee
Ginney and Foster McDonald
Mr. and Mrs. John T. Moss
Mr. and Mrs. John H. Shields and Family
Ms. Jean Wessel Templeton
Mr. and Mrs. George H. Thacker
Mr. and Mrs. Mike Wicks
Kimberly and Austin Ziehlke

Benefactor Level: \$1,200

Inspire & Achieve, Fred Frost
Mr. and Mrs. George M. Jones, III
Cathy and Brian Scholl

Patron Level: \$600

Phyllis and Hank Holland
Frances K. Huffman
Dr. and Mrs. Benjamin R. King
Dr. and Mrs. James McMurray
Joan and Walter Mendes
Dr. and Mrs. Harold Pastrick
Dr. and Mrs. L. Allen Perkins
Mr. and Mrs. John R. Purdy
Cynthia E. Stewart and Arthur C. Johnson
Mr. and Mrs. Thomas M. Thompson
Alice J. Wellette
Ann and Andy Williams

Sponsor Level: \$300

Amy and Bo Bailey
Mr. and Mrs. Ray Baker
Nancy Brower and Rusty Borman
Mr. and Mrs. Bryan Butler
James Chesney
Kevin Crawford
Dr. and Mrs. Meyer E. Dworsky
John Fowler
Patricia Kiley
Mr. and Mrs. Richard Kowallik
Mrs. Christel P. Latham
Cynthia and John Markushewski
Sam McClain
Dr. and Mrs. Robert S. Moorman, Jr.
Mr. and Mrs. Lee Prout
Judy and Steven Purinton
Mary and Craig Romer
Patricia H. Ryan
Betty Schonrock
Carol and Jim Tevepaugh
Helen and Ed Vaughn
Gisele and John Wilson
Mr. and Mrs. Newell Witherspoon
Linda and Gordon Woodcock

Friend Level: \$175

Kristen and Matt Anderson
Mr. and Mrs. Eugene R. Andrzejewski
Lynne Berry
Mr. and Mrs. Albert J. Boyer
Dr. Loretta G. Brown
Kenia and Roger Bultman

Mr. and Mrs. Richard A. Campbell
Dr. and Mrs. P. Michael Caruso
Dr. and Mrs. James E. Chandler
Dr. and Mrs. William N. Confer
Paula Cothren
Dr. and Mrs. Larry Crow
Kathy and Harvey Cutter
Mr. and Mrs. James Daughtry
Telse and Bernard Davis
Nina Donath
Dr. and Mrs. Richard A. Finch
Peggy and Paul Gattis
Carolyn and Ronald Gormont
Mary Gray
Janie Green
Rajean and John Gully
Amy and David Harbarger
Nicole and Tim Harper
Mr. and Mrs. Lee Hoekenschneider
Major General (USA Ret) &
Mrs. John W. Holly
Sherri and Jess Hudgins
Ashley and Scott Hudson
Mr. and Mrs. David Johnston
Jane Jones
Mr. Joseph Jones
Stephanie Kennedy-Mell
Dr. and Mrs. J. Robert Lancaster
Marilyn Lands and Robin Cozby
Mr. Daniel R. Little

Jenny and Stephen Madkour
Laura and Darren Malone
Mr. and Mrs. William C. Mastin
Stephanie McCullough
Mr. and Mrs. W. Robert Mixon, Jr.
Mr. and Mrs. David E. Moore
Mr. and Mrs. Frederick G. Muhl
Kevin Norris
Dr. and Mrs. Charles Overstreet
Maria Priebe
Mr. and Mrs. Jeffrey A. Prozan
Mr. and Mrs. Byron Purves
Beverly and Ralph Redrick
Pam and Ken Rhodes
Ann and Ernie Rivard
Mr. Mike Roddy
Julia and Nick Roth
Mr. and Mrs. Jim Rountree
Judith Rushton
Lee Anne and George Smith
Aleta Stender
Elaine and Jay Stowe
Tim Takacs
Kathi and Norm Tew
Ronold B. Thomas
Mr. and Mrs. Howard A. Thrailkill
Larry and Ann Tubbs
Laura and Johnnie Vann
Mary Ruth Yates

Many thanks to our Foundation Board members!



(Front row l. to r.) Anne Pollard, Kerry Doran, Dabsey Maxwell, Parke Keith; (middle l. to r.) Todd McBride, Lori Webber, Cathy Scholl, Laurie Heard, Kathi Tew, Patrick Fleming; (back row l. to r.) Andrea Petroff, Wendy Johnson, Vicki Edwards, Heather Baker, Caroline Bentley, Blake Mitchell. Not pictured: Nancy Bradford, Joyce Griffin, Cindy Kamelchuk, Rosemary Lee, Herman Stubbs, Charlotte Wessel

Annual Giving October 2015-April 2016

\$5,000-\$9,999

Betsy and Peter Lowe

\$1,000-\$4,999

Mr. and Mrs. Rey Almodovar

Mr. and Mrs. Robert Baron, Sr.

Mr. and Mrs. Tom Berg

Combined Federal Campaign

Mr. and Mrs. Richard L. Crunkleton

Kathleen and Philip Dotts

Ivy Downs and A.J. Albert

Dr. and Mrs. R. Parker Griffith

Anne C. Pollard

Becky and Bill Quinn

Mr. and Mrs. John H. Shields and Family

Anne and Ed Uher

\$500-\$999

Beth and Randy Bailey

Mr. and Mrs. Thomas J. Doran

Mr. and Mrs. Steuart A. Evans

Joyce Griffin

Stephanie McCullough

Liz and Rob Morris

Libby and Mike Stanfield

Elizabeth Sudderth

\$100-\$499

Anonymous

Diana and Craig Akridge

Courtney and John Allen

Peter Barber

Penny Bashore

Ann and John Battcher

Dr. and Mrs. Richard R. Cannon

Dr. and Mrs. James G. Carver

Martha Childs

Ellen Chorba

Mr. and Mrs. J. Wesley Clayton

Pattie and John Cline

Lori and Steve Compber

Janet and Kevin Crawford

Mr. and Mrs. James Daughtry

Mr. and Mrs. James E. Davis, Jr

Marcie and William Emerson

Deborah and Sam Fara

Elmer Field

Mr. and Mrs. James E. Fowler

Michael Fowler

Annette and Brad Gass

Peggy and Paul Gattis

Dr. and Mrs. Carl J. Gessler, Jr.

Dr. and Mrs. Jim Goldbach

Dr. and Mrs. Jerry M. Graham

Mr. and Mrs. W.R. Green, Jr.

Beth Griggs

Sheri Gross

Mr. and Mrs. P.L. Hassler, Jr.

Peg and George Heeschen

Amy and Ted Henrich

Mr. and Mrs. William W. Herrin

Dr. and Mrs. David Hertha

Dr. and Mrs. Louis G. Horn, III

Mr. and Mrs. John E. Irby

Renée M. Jasinski

Marijane and Gary Jerauld

Shirley and Richard Johnson

Mr. and Mrs. George M. Jones, III

Jane A. Jones

Dr. and Mrs. P.R. Kakani

Dr. and Mrs. Benjamin R. King

Dr. and Mrs. Troy Layton

Mr. and Mrs. J. Donald Lewter

Theresa Loeb

William Martin

Mr. and Mrs. Brad McMurray

Mr. and Mrs. Robert L. Middleton

Margaret Milford

Genie and Bob Miller

Jan and Les Miller

Jane Monroe

Janice and David Moore

Sunchai Moore

Dr. and Mrs. Everett C. Mosley

Mr. and Mrs. Frederick G. Muhl

Kevin W. Norris

Suzanne O'Connor

Marcia and Charles Overstreet

Susan Ozment

Marilyn M. Passino

Margaret Pelham

Dorothea and Thomas Pierce

Michael Propst

Kristen Purvis and Russell Hedden

Donna and Stan Pylant

Dorothy and Joseph Rea

Dr. Barbara S. Rice

Mr. and Mrs. Charles Grigg Robinson

Mr. Mike Roddy

Betty Schonrock

Dr. and Mrs. Marshall T. Schreeder

Dr. and Mrs. Robert Serio

Mr. and Mrs. Andrew D. Setlow

Nancy and Ray Sheppard

Mr. and Mrs. William E. Shinn

Mr. and Mrs. Jennings Simmons

Yvonne Simms

Patty Smith

R.D. Stottle

Dr. Greg Strickland

Mr. and Mrs. Mark A. Strickland

Josephine Stroud

Mr. and Mrs. Jesse P. Stutts

Mr. and Mrs. Brent L. Taylor

Mr. and Mrs. Thomas Thompson

Mr. and Mrs. Richard Titus

Mrs. Frank W. Troup

Ann Upchurch

Mr. and Mrs. Richard P. Van Valkenburgh, Jr.

Andrea Vandervoort

Margaret J. and Mack Vann

Betty and Thera Vaughan

Mrs. Ruth G. von Saurma

Dr. and Mrs. Al Watson

Lee S. Weed

Ina Wilson and Garrett C. Smith

Mr. and Mrs. Newell Witherspoon

Dana and Joe Woddy

Linda and Gordon Woodcock

Kennie and Len Worlund

Dr. Mary Ruth Yates

Patricia and James Zeigler

\$1-\$99

Anonymous (4)

Susan L. Barraza

Sara B. Batson

Dr. and Mrs. Edward Behmer

Mr. and Mrs. Roger C. Bishop

Kakki and J.R. Brooks

Elsie and Charlie Brown

Madelyn Poteat Bussey

Dorothy Ann Chesley

Mr. and Mrs. John C. Christopher

Lois N. Churchill

Cynthia Cifuentes

Mr. and Mrs. Steve Cushman

Audrey and Don Day

Mr. and Mrs. Herman Gierow

Lois and Tim Grey

Brigitta Griggs

Linda and Bob Guzowski

Delores Hall

Mrs. W.E. Heidish

Sue Hensley

Mrs. Marie Hewett

Fran and Joe Hidalgo

Mr. and Mrs. Darryl Holder

Mr. and Mrs. A.K. Hovater

Kathryn and Joseph Kervin

Judy and Paul Kunitz

Margaret and Nick Leone

Anne and George Lewis

Cathy Lewis

Mr. and Mrs. Jeffrey A. Lienau

Susan R. Livingston

Christine Madkour-Companion

Cathy and John Matras

Judy Maxwell

Jane A. McBride

Ann McClain and Kerry England

Linda and Jay Newkirk

Mrs. K.M. Ofenloch

Charlotte Olson and Timothy Tolar

Mary Anne and Leon Riley

Ellen and Jim Robinson

Mrs. Richard Rutenberg

Maria Rutledge and Dick Spencer

Mr. and Mrs. Michael Segrest

Roseanne and Wayne Smythe

Jule and Jon Spano

Darlene Springer

Dr. and Mrs. Wilhelm Tietke

Sandra and Pat Valley

Ann Walker

Joan S. Warren

Jackalyn Wilcox

In-Kind Support December 2015-April 2016

Altherr Howard Design

BBD Graphics

In Bloom Floral Design Studio

Christopher J. Madkour

Melanie Murray

Sound Source Productions, Inc.

Jay Rousey

Wendy and Brent Worley

Thank You!

Masterpiece Society 2015 *An elite society of members who support the Museum through either one-time or cumulative giving throughout the year of \$2,500 or more. January 1-December 31, 2015*

Platinum Circle \$20,000 +
Alabama State Council on the Arts
Mrs. Dorothy Davidson
PNC
Redstone Federal Credit Union
The Daniel Foundation of Alabama
The Jane K. Lowe Charitable Foundation

Gold Circle \$10,000-\$19,999
Bentley Automotive
Dr. and Mrs. C.H. 'Tony' Chan
HighTower Twickenham
IBERIABANK
Jerry Damson Honda Acura
Mr. and Mrs. Peter L. Lowe
Mrs. Oscar N. Maxwell
Progress Bank
Smith Thornton Advisors LLC
Ms. Jean Wessel Templeton
The Jurenko Foundation
The Olin B. King Foundation
The Propst Foundation
Toyota Motor Manufacturing Alabama, Inc.
Angie and Sam Yeager

Silver Circle \$5,000-\$9,999
Mr. and Mrs. Rey Almodovar
BBVA Compass Bank
Big Spring Environmental, LLC
Bill Penney Toyota
Bobby Bradley and Charley Burruss
Alice Chang
Complete Dental

ELab Consulting Services, Inc.
Dr. and Mrs. Carl J. Gessler, Jr.
Joyce Griffin
Dr. and Mrs. Frank P. Haws
Hiley Cars Huntsville, LP
Huntsville Laser Center, LLC
Mrs. Ruth Jurenko
Mrs. Shelbie King
Mr. and Mrs. Joe Lee
Maynard Cooper and Gale PC
Mercedes-Benz of Huntsville/
Landers McLarty Nissan
Dr. and Mrs. Rhett B. Murray
Mr. and Mrs. Jerre Penney
Mrs. Wilton H. Pollard Jr.
Regions Bank
SEA Wire and Cable, Inc.
Mr. and Mrs. John H. Shields & Family
Mrs. Mark C. Smith
Mr. and Mrs. Rusty Stephenson
The Boeing Company

President's Circle \$2,500-\$4,999
Aero Thermo Technology
Alabama Anesthesia of Huntsville, LLC
Dr. and Mrs. Robert A. Altenkirch
Mr. and Mrs. Dane Block
Mr. and Mrs. David Block
Blue Cross and Blue Shield of Alabama
Bradley, Arant, Boulton and Cummings
Brasfield & Gorrie
Clinic For Women, P.A.

Donny's Diamond Gallery, Inc.
Donny Maleknia and Fatemeh Nazarieh
Mr. and Mrs. Philip C. Dotts
Dunagan Yates & Alison
Mr. and Mrs. Earl I. Eastin
FirstBank
Mr. and Mrs. George M. Jones, III
Lanier Ford Shaver & Payne, P.C.
Lockheed Martin
Christopher J. Madkour
McDaniel and McDaniel, L.L.C.
Moss Lumber Industries, Inc.
North Alabama Chemical Company
The Orthopaedic Center
Parker Griffith Family Foundation
Parsons
Pearce Construction Company, Inc.
Randolph School
Raytheon
Rheumatology Associates of N. Alabama
Dr. and Mrs. Bradley S. Rice
Dr. and Mrs. F. Calame Sammons
Dr. and Mrs. Brian Scholl
Loretta Spencer
Mr. William H. Stender Jr.
Mr. and Mrs. George H. Thacker
The Surgery Center of Huntsville
Mr. and Mrs. Edward L. Uher
Dr. and Mrs. T. Benton Washburn
Wells Fargo Bank, N.A.
Mr. and Mrs. John R. Wynn



Elegance and Artistry

It's what your event deserves.

Huntsville Museum of Art
300 Church Street SW • Downtown Huntsville
256.535.4350 ext. 207
hsvmuseum.org
Visit our listing on mywedding.com.

BEST of BAMA
AWARDED 2014

Program and Exhibition Sponsors As of April 30, 2016

Voices of Our Times

Series Sponsors:



Glenn Lowry

April 21, 2016

Support provided by:

Nell and David Johnston
Shelbie King
Carolyn Wade

Bunny Williams

June 9, 2016

Lead Sponsor:

Ms. Jean Wessel Templeton

Media Sponsor:



Support provided by:

Lyn Aust	MM Interiors, Inc.—Mary
Leslie Crosby	Margaret Johnson, ASID
Xan Curran	Judy Maxwell
Lynne Evans	Shirley D. McCrary
Layne Dorning	Jean Penney
Patsy Haws	Anne Pollard
Shelbie King	Randy Roper
Judy Link	Lucinda Schreeder
Betsy Lowe	Charlotte Wessel

Additional support provided by:

Brooks & Collier, Inc.
Carlton's Market and Catering



An American Romantic The Art of Luigi Lucioni

July 10-September 25, 2016

Co-Lead Sponsors:



Exhibition Sponsors:

Sally and Robert Arthur
Alice Cheney
Jane and Pete Childs
Marty Childs
Betsy and Peter Lowe
Christopher J. Madkour
Bill McMillen
Rose Napolitano
Mrs. Linda Oskam
Signa Read
Barbara Riley
Libby Sturges
Ruth Yates

Additional support provided by:

Sharman Buechner Altshuler
Dinah Buechner
Rev. Fred and Judy Buechner
Susanne and Chris Davis
Helen Deeley
Dr. Stuart Embury
Kathleen and Doug Mariboe
Barbara Melhado
Charlotte Milan
Jennifer and Paul Silverman
Lila and Gill Silverman
The Alabama State Council on the Arts and
Alabama Alliance for Arts Education
The Huntsville Museum of Art Guild

Homeland: Photographs by Barry M. Goldwater

July 10-September 25, 2016

Co-Lead Sponsors:



Exhibition Sponsors:

Cynthia and Rey Almodovar
Dr. and Mrs. Abraham Madkour & Family
Ms. Jean Wessel Templeton



Additional support provided by:

The Alabama State Council on the Arts and
Alabama Alliance for Arts Education
The Huntsville Museum of Art Guild
Goldwater Family Foundation

Over the Top: American Posters from World War I

July 24-October 2, 2016

Lead Sponsor:



Exhibition Sponsors:

Cynthia and Rey Almodovar



Additional support provided by:

The Alabama State Council on the Arts and
Alabama Alliance for Arts Education
The Huntsville Museum of Art Guild
Gerry and Virgil Schaffer

HMA Board of Directors



Pictured left to right are: Patsy Haws, Herman Stubbs, Virginia Rice, Richard Crunkleton, Joyce Griffin, Carole Jones, David Nast, Betsy Lowe, Dorothy Davidson, Charlie Bonner, Walter (Tod) Dodgen, Sarah Gessler and John Wynn.

Thank You!

Tributes December 2015-April 2016

Memorials

In Memory of Kathleen Anderson

Dr. and Mrs. Frank Haws

Mr. and Mrs. George Mahoney, Jr.

In Memory of Brett Berman

Mr. and Mrs. David Block

In Memory of Trij and Milton Brietzke

Dr. and Mrs. Eugene R. Andrzejewski

In Memory of Bitsy Coleman

Dr. and Mrs. John Panico

In Memory of Leila Stewart Falt

Susan and Charles Bowman

Emily Chase Cook

Mrs. Susan Farbman

Vicki and Larry Ivy

Mr. and Mrs. George Neal

Karin and Kenneth Randolph

Mrs. Ruth G. von Saurma

In Memory of Mattie Fuller

Mrs. Edna Kendall

In Memory of Anne Beck Garnett

Dr. and Mrs. Carl J. Gessler, Jr.

In Memory of Dr. Mabry Miller

Dee and Richard Kowallik

In Memory of Willis Bryan Owings

Mrs. Edna Kendall

In Memory of Guy J. Spencer

Dr. and Mrs. Carl J. Gessler, Jr.

In Memory of Mrs. Flo Stockton

Mr. and Mrs. George Mahoney, Jr.

Honoraria

In Honor of Dr. and Mrs. Gil Aust

Dr. and Mrs. Benjamin R. King

Judy Maxwell

In Honor of Dr. and Mrs. Kendall Black

Dr. and Mrs. Benjamin R. King

In Honor of Mr. and Mrs. Hall Bryant

Dr. and Mrs. Benjamin R. King

In Honor of Ms. Nancy Davis

Judy Maxwell

In Honor of Mr. and Mrs. Claude Dorning

Dr. and Mrs. Benjamin R. King

In Honor of Dr. and Mrs. Carl J. Gessler, Jr.

Mrs. Frank W. Troup

In Honor of Dr. and Mrs. Charles Graffeo

Judy Maxwell

In Honor of Dr. and Mrs. Dan Guyton

Dr. and Mrs. Benjamin R. King

In Honor of Dr. and Mrs. Frank Haws

Dr. and Mrs. Benjamin R. King

In Honor of Mr. Eric Johnson

Shirley and Richard Johnson

In Honor of Mrs. Madding King and Family

Dr. and Mrs. Benjamin R. King

In Honor of Mr. and Mrs. Peter Lowe

Dr. and Mrs. Benjamin R. King

Judy Maxwell

Mary Alice Naylor

Mrs. Frank W. Troup

In Honor of Christopher Madkour

Jean Brewer

Dolores Mahlmann

Signa L. Read

In Honor of Judy Maxwell

Mrs. Frank W. Troup

In Honor of Dr. and Mrs. Walter Meyer

Dr. and Mrs. Benjamin R. King

In Honor of Dr. and Mrs. Bill Mims

Judy Maxwell

In Honor of Dr. and Mrs. Robert Mitchell

Judy Maxwell

In Honor of Dr. and Mrs. Jack Moody

Judy Maxwell

In Honor of Dr. and Mrs. Robert Moorman

Judy Maxwell

In Honor of Lil Parton

Amy and Mark Mata

In Honor of Mr. and Mrs. Dave Payne

Dr. and Mrs. Benjamin R. King

In Honor of Mrs. W.H. Pollard

Dr. and Mrs. Benjamin R. King

In Honor of Mr. Ken Rivenbark

Dr. and Mrs. Benjamin R. King

In Honor of Mr. and Mrs. Charles Robinson

Dr. and Mrs. Benjamin R. King

In Honor of Mr. Randy Roper

Dr. and Mrs. Benjamin R. King

In Honor of Dr. and Mrs. Calame Sammons

Dr. and Mrs. Benjamin R. King

In Honor of Mr. and Mrs. Mike Segrest

Dr. and Mrs. Benjamin R. King

In Honor of Dr. and Mrs. Bill Sullins

Dr. and Mrs. Benjamin R. King

In Honor of Deborah Taylor

Patty Smith

In Honor of Mrs. Frank Troup

Judy Maxwell

In Honor of Dr. and Mrs. Buddy Walker

Judy Maxwell

In Honor of Mrs. Braswell Wright

Dr. and Mrs. Benjamin R. King

In Honor of Mr. and Mrs. Sam Yeager

Dr. and Mrs. Benjamin R. King

Guild provides vital Museum support for more than 50 years!



Endowment Support January-April 2016

A gift to the Huntsville Museum of Art's endowment is one of the most enduring contributions you can make to the Museum. Endowed funds play an essential role in our future growth and long-term financial security. A donation to the endowment fund may be designated for a specific program, art purchase, or directed to unrestricted use.

We would like to thank the following Endowment supporter:

The Education Endowment: Scholarships for Museum Academy Classes

If you are interested in making a gift to the Museum's endowment fund, please contact Andrea Petroff at 256-535-4350 ext. 214 or apetroff@hsvmuseum.org.

May 14 through July 25

summer
SmartPlay
2016

Featured Exhibition



The U.S. Space & Rocket Center presents its newest featured exhibition, *Summer Smart Play* on display May 14 through July 25.

Explore the forces of energy and nature through a variety of activities, including feeling the vibrations and sounds of an earthquake!

The exhibit also includes a working storm shelter and the Rocket Center's new Magic Planet® interactive, spherical display where guests can see hurricanes in motion, airplanes navigating the globe and the Earth's climate at work.

Call 1-800-637-7223 to find out more!

U.S. Space & Rocket Center®



ARCHIMEDES' EXHIBITION 300 YEARS OF SCIENCE AND DISCOVERY

COMING AUGUST 6, 2016

Visit the world-premiere of "The Science of Archimedes" exhibition, beginning August 6! This exhibit showcases inventions and scientific discoveries of Archimedes, the "Father of Modern Science" and takes guests on a journey through history and science with a look at the machines of the ancient world. While the concepts are centuries old, many of these ancient technologies have been adapted for use today. With computer-modeled animations, interactive machines and an activity station for ages 3 to 14, this exhibit is designed for all ages.

ROCKETCENTER.COM/ARCHIMEDES



This exhibition was created by Artisans of Florence - International.

Sponsor Memberships December 2015-April 2016

Platinum Circle \$20,000+

PNC

Ms. Jean Wessel Templeton

Gold Circle \$10,000

Bentley Automotive

HighTower Twickenham

Jerry Damson Honda Acura

Landers McLarty

Progress Bank

Smith Thornton Advisors LLC,

Steve Thornton

The Broadway Group, LLC, Bob Broadway

Toyota Motor Manufacturing Alabama, Inc.

Angie and Sam Yeager

Silver Circle \$5,000

Appoint Group, LLC

BBVA Compass Bank

Big Spring Environmental, LLC

Brasfield & Gorrie

ELab Consulting Services, Inc.

Hiley Cars Huntsville, LP

Huntsville Laser Center, LLC

Mrs. John A. Jurenko

Mrs. Shelbie King

Mr. and Mrs. Joe Lee

Mercedes-Benz of Huntsville/

Landers McLarty Nissan

North Alabama Neurological, P.A.

Regions Bank

Sports Med

President's Circle \$2,500

Alabama Anesthesia of Huntsville, LLC

Edna and David Block

Bradley, Arant, Boulton and Cummings

Clinic For Women, P.A.

Donny's Diamond Gallery, Inc.

Lanier Ford Shaver & Payne, P.C.

McDaniel and McDaniel, L.L.C.

Parsons

Pearce Construction Company, Inc.

Randolph School

Raytheon

Rheumatology Associates of N. Alabama

The Surgery Center of Huntsville

Wells Fargo Bank, N.A.

Artist's Circle: \$1,500

Aero Thermo Technology

Naming Gift Opportunities

Naming gift opportunities at the Huntsville Museum of Art have a tangible impact on our mission to bring people and art together. While supporting the building fund, these gifts also allow us to honor and recognize our incredible patrons and friends of the Museum.

If you are interested in naming gift opportunities at the Museum, please contact Andrea Petroff at 256-535-4350 ext. 214 or apetroff@hsvmuseum.org.



1.



2.



3.



4.



5.



6.



7.

Voices of Our Times

David Sanger

January 23, 2016

1. Shelbie King, Middie Thompson, Parker and Virginia Griffith
2. Kathleen and Phil Dotts, Dorothy Davidson
3. David Sanger
4. Chris and Stacy Kern, Christopher Madkour, David Sanger
5. Bob and Beth Altenkirch and Mayor Tommy Battle

Glenn Lowry

April 21, 2016

6. David Johnston, Carolyn Wade, Glenn Lowry, Shelbie King, Nell Johnston
7. Pat Ammons, Lee Roop, Stephanie Vickers
8. Sarah Cole, Marcia Freeland
9. Charles and Mary Lou Boettcher, Graham Boettcher



8.



9.

Voices of Our Times Series Sponsors



A full listing of Voices of Our Times sponsors is featured on page 23.

MAY

15		<i>HPS: 2016 Members' Showcase</i> OPENS
15		<i>Frozen in Place: Southern Photographs from the Collection</i> OPENS
26	4-8 p.m.	Museum Store Trunk Show with Alabama Chanin
30		Museum closed for Memorial Day

JUNE

9	11:30 a.m.	<i>Voices of Our Times</i> with Bunny Williams
12	12-5 p.m.	<i>Down Home: Contemporary Southern Masters</i> FINAL DAY
17	5:30-9 p.m.	Palette Pitstop on the Museum Portico (Church Street)
18	11 a.m.-1 p.m.	Drop-in & CREATE Saturday: <i>Rockin' Rockets</i>
26	1 p.m.	Docent-led, Public Tour of <i>Folk Couture: Fashion and Folk Art</i>
26	2 p.m.	Gallery Walk and Opening Reception for <i>Encounters: Dustin Farnsworth</i>
26	12-5 p.m.	<i>Folk Couture: Fashion and Folk Art</i> FINAL DAY
26	12-5 p.m.	<i>Encounters: Dustin Farnsworth</i> OPENS

JULY

4		Museum closed for Independence Day
9	6-8 p.m.	Preview Party for <i>An American Romantic and Homeland</i>
10	12-5 p.m.	<i>An American Romantic: The Art of Luigi Lucioni</i> OPENS
10	12-5 p.m.	<i>Homeland: Photographs by Barry M. Goldwater</i> OPENS
10	12-5 p.m.	<i>William Christenberry: Time, Distance and Memory</i> FINAL DAY
15	5:30-9 p.m.	Palette Pitstop on the Museum Portico
16	11 a.m.-1 p.m.	Drop-in & CREATE Saturday: <i>FUN in the Sun!</i>
21	5-8 p.m.	Summer Citywide Gallery Tour
23	6-8 p.m.	Preview Reception for <i>Over the Top: American Posters from World War I</i>
24	12-5 p.m.	<i>Over the Top: American Posters from World War I</i> OPENS

AUGUST

18-21	9 a.m.-4 p.m.	Master Artist Workshop with Robert K. Carsten; pre-registration required
19	5:30-9 p.m.	Palette Pitstop on the Museum Portico
20	11 a.m.-1 p.m.	Drop-in & CREATE Saturday: <i>Imaginary Inkblot Creatures</i>
21	2 p.m.	Docent-led, Public Tour of <i>Frozen in Place: Southern Photographs from the Collection</i>
21	12-5 p.m.	<i>Frozen in Place: Southern Photographs from the Collection</i> FINAL DAY
21	12-5 p.m.	<i>Huntsville Photographic Society: 2016 Members' Showcase</i> FINAL DAY

SEPTEMBER

5		Museum closed for Labor Day
11	12-5 p.m.	<i>MY HERO: Contemporary Art & Superhero Action</i> OPENS
11	2 p.m.	Gallery Walk and Opening Reception for <i>MY HERO: Contemporary Art & Superhero Action</i>
17	11 a.m.-1 p.m.	Drop-in & CREATE Saturday: <i>FABULOUS Fall Trees</i>
25	12-5 p.m.	<i>An American Romantic: The Art of Luigi Lucioni</i> FINAL DAY
25	12-5 p.m.	<i>Homeland: Photographs by Barry M. Goldwater</i> FINAL DAY
25	2 p.m.	Docent-led, Public Tour of <i>An American Romantic: The Art of Luigi Lucioni</i>



Mike Alcantara, *Superman*, comic book collage, mixed media, 48 x 24 inches. From *My Hero: Contemporary Art & Superhero Action* coming THIS September! Organized by Carrie Lederer, curator of Exhibitions, Bedford Gallery, Leshner Center for the Arts, Walnut Creek, California.

Museum Hours

Sunday	12-5 p.m.
Monday	Closed
Tuesday	11 a.m.-5 p.m.
Wednesday	11 a.m.-5 p.m.
Thursday	11 a.m.-8 p.m.
Friday	11 a.m.-5 p.m.
Saturday	11 a.m.-5 p.m.

Admission

Members and children under 6 free!
 Adults: \$10
 Children 6 and up and Students: \$5
 Seniors, Active Military and Educators: \$8
 Groups of 10 or more: \$7 per person



Huntsville Museum of Art

300 Church Street S.W., Huntsville, Alabama 35801
256-535-4350 hsvmuseum.org

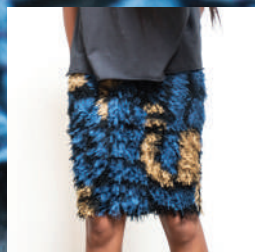
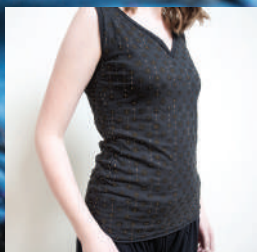
PRST STD
U.S. Postage
PAID
Huntsville, AL
Permit No. 682



Editor: Stephanie Kelley, APR

Design: Red Dot Communications

Photography: Michael Bradley, Stephanie Kelley, Jeff White



ALABAMA
CHANIN

Trunk Show

Thursday, May 26 • 4 to 8 p.m.



Huntsville Museum of Art

Museum Store: 256.535.4350 ext. 209

While you're here, visit
Folk Couture: Fashion and Folk Art
for \$5 After Five.

Museum members enjoy
a 10% discount!