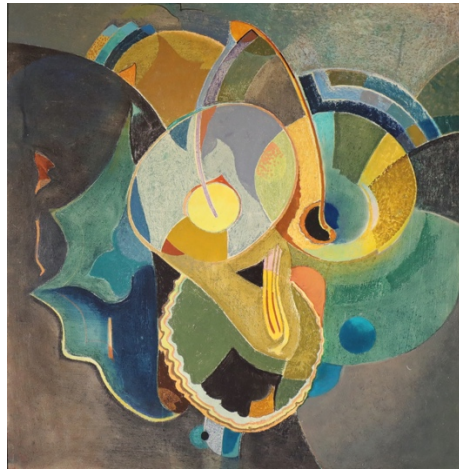


WILL HENRY STEVENS

Naturalist / Modernist

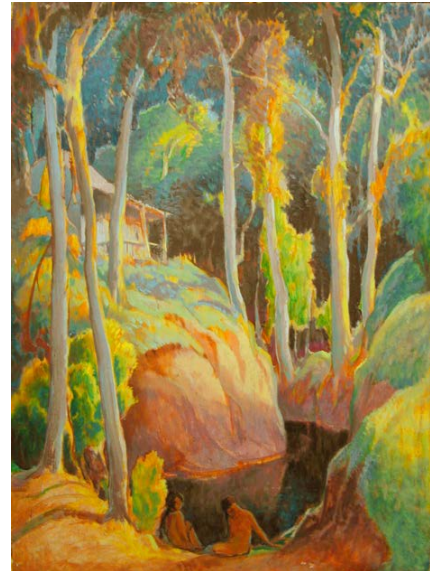
Organized by the Huntsville Museum of Art, Huntsville, AL
and Blue Spiral 1, Asheville, NC



From the early 1920s through late 1940s, American artist Will Henry Stevens (1881-1949) enjoyed a career as an influential teacher and painter, exhibiting regionally and nationally to critical acclaim. Regarded today as a pioneer in the field of Southern art, Stevens worked in two dissimilar artistic styles: Representational Naturalism and Southern Modernism. During his lifetime Stevens separated his two bodies of work, exhibiting his rural landscapes and his non-objective abstractions at different galleries. Though seemingly disconnected, Stevens' distinct styles are part of a larger whole — each born from the soul of an artist strongly influenced by his reverence for nature. Although born and raised in Indiana, Stevens spent his adult life teaching in New Orleans and summering near Asheville, North Carolina. The rivers and bayous of Louisiana and the Southern Appalachian mountains inspired him to capture the changing landscapes in his colorful and lyrical works.

Living in a time marked by great change, Stevens constantly adapted his artistic style and media throughout his career, but his engaging work never lost its inextricable link to nature. Unlike most of his contemporaries, he pursued an independent path as an artist. His work was influenced by many sources including artists Wassily Kandinsky and Paul Klee; Chinese painters and philosophers of the Song Dynasty; transcendentalists Ralph Waldo Emerson and Henry David Thoreau; and by his own spiritual attunement to the natural world. In 1940 Stevens reflected on his unique approach to artmaking: *It has been my experience ... gradually to depart from the representation of surface appearance and to develop symbols expressive of cosmic values. There is always the desire to express the harmonious interconnection of each and every element, and to create a feeling of wholeness more satisfying than our ordinary experience in time.*

Exhibition Fact Sheet



- Contents:** 54 original works in oil, pastel and watercolor, spanning the artist's unique career.
- Space Req:** Approximately 3,000 square feet
- Materials:** 50 copies of exhibition catalogue, **Will Henry Stevens: Naturalist/Modernist**; formatted text for making intro panel and object labels; sample press release; high-resolution digital publicity images.
- Shipping:** Exhibition will be transported crated via approved fine art carrier. Exhibition arrives ready to install. Venue pays round-trip shipping (or outgoing to next venue).
- Insurance:** Exhibition is fully insured except for "negligence" and a \$500.00 deductible while in exhibitor's care. Venues must complete a condition report after unpacking and before repacking exhibit.
- Handling:** Trained handlers only may unpack, install, and repack the exhibit.
- Security:** High security. Responsible supervision by trained personnel; exhibit locked after hours; alarms or night guards required; fire protection in compliance with local ordinance. Venue must submit AAM facility report for review.
- Rental Fee:** \$22,500 for a 12-week rental period, plus shipping by approved fine art carrier (shipping cost to be determined).
- Payment:** 50% deposit due at signing of rental agreement. Balance of rental is due within 30 days of opening date at venue.

Tour Dates

October 17, 2021 – January 9, 2022	OPEN
January 30 – April 24, 2022	OPEN
May 15 – August 7, 2022	OPEN
August 28 – November 20, 2022	OPEN
December 11, 2022 – March 5, 2023	OPEN
March 26 – June 18, 2023	OPEN
July 19 – October 1, 2023	OPEN
October 22, 2023 – January 14, 2024	OPEN



Questions / Contact:

Peter J. Baldaia, Director of Curatorial Affairs, Huntsville Museum of Art, 300 Church Street SW, Huntsville, AL 35801 USA 256-535-4350, ext. 218; pbaldaia@hsvmuseum.org